

DAIRY DIGITS



MARCH 2022

Dairy Digits is a Milk SA feature. It is also available on the Milk SA website: milksa.co.za.

Table 1 Key market indicators

| Item | Period | Value | Percentage change (same period previous year) |
|---|--|--------|---|
| Unprocessed milk purchased ('000 tonnes) | 2019 ¹ | 3 433 | +0,65% |
| Unprocessed milk purchased ('000 tonnes) | 2020 ¹ | 3 427* | -0,16% |
| Unprocessed milk purchased ('000 tonnes) estimate | Dec 21 ¹ | 323 | +2,60% |
| Unprocessed milk purchased ('000 tonnes) estimate | Jan 21 ¹ –Dec 21 ¹ | 3 403 | -0,72% |
| Dairy imports ('000 tonnes) | 2020 ² | 60,6 | -19,8% |
| Dairy imports ('000 tonnes) | Jan 21 ² –Nov 21 ² | 70,1 | +25,4% |
| Dairy exports ('000 tonnes) | 2020 ² | 46,7 | +3,5% |
| Dairy exports ('000 tonnes) | Jan 21 ² –Nov 21 ² | 45,6 | +8,3% |
| Dairy exports inclusive of sales to other SACU countries ('000 tonnes) | Jan 21 ⁵ –Nov 21 ⁵ | 187 | +2,0% |
| Producer price index of unprocessed milk (base Dec 20 = 100) ³ | Dec 21 ³ | 110,3 | +10,4% |
| Farm requisite price index (base 2010 = 100) ⁴ | Jul 21 ⁴ | 129,7 | +4,2% |
| Producer price index of dairy products (base Dec 20 = 100) ³ | Dec 21 ³ | 110,7 | +10,7% |

Source:

¹ Milk SA returns

² SARS statistics supplied by SAMPRO

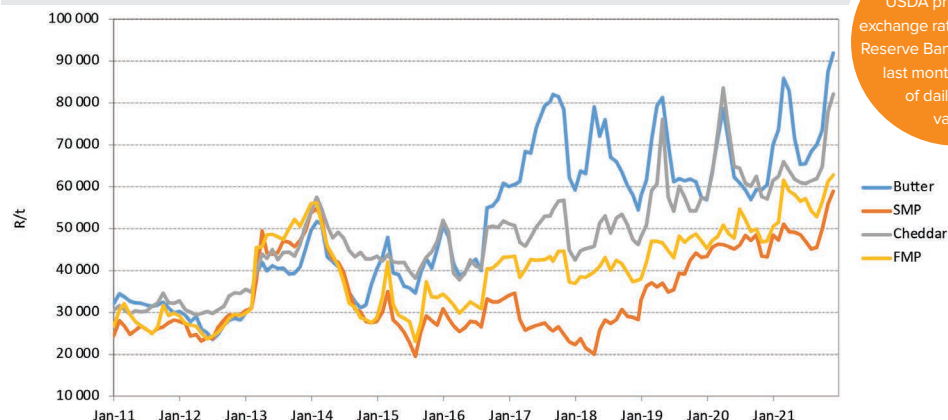
⁵ SARS statistics supplied by Agri Inspec

³ Stats SA PPI index

⁴ DALRRD price index of farm requisites

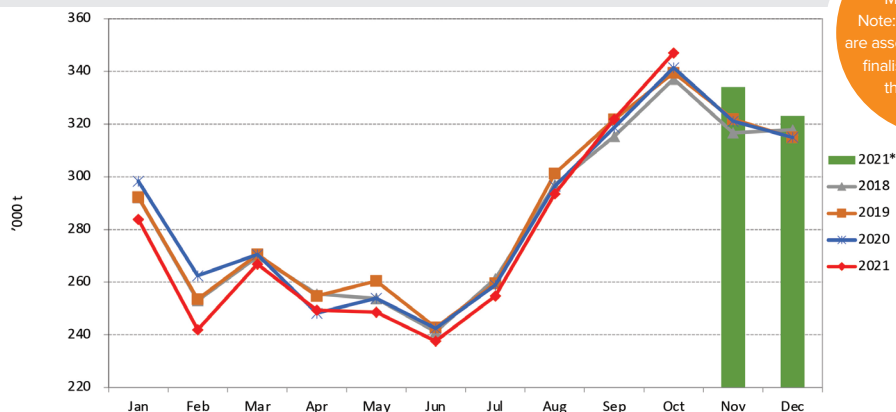
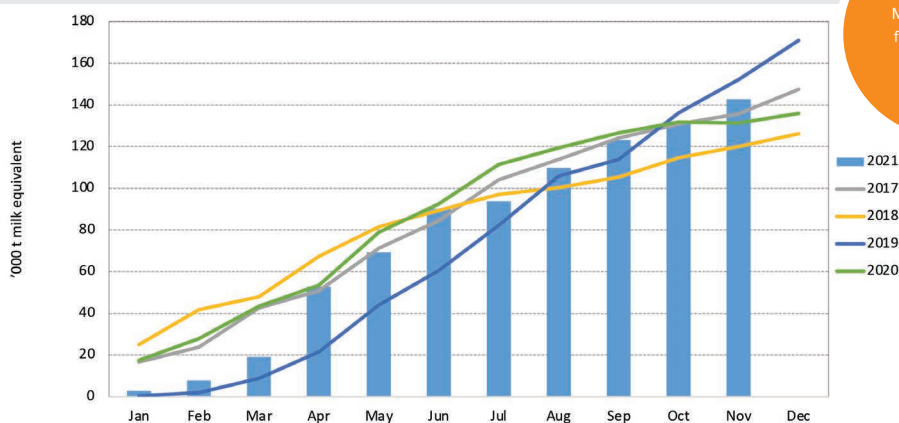
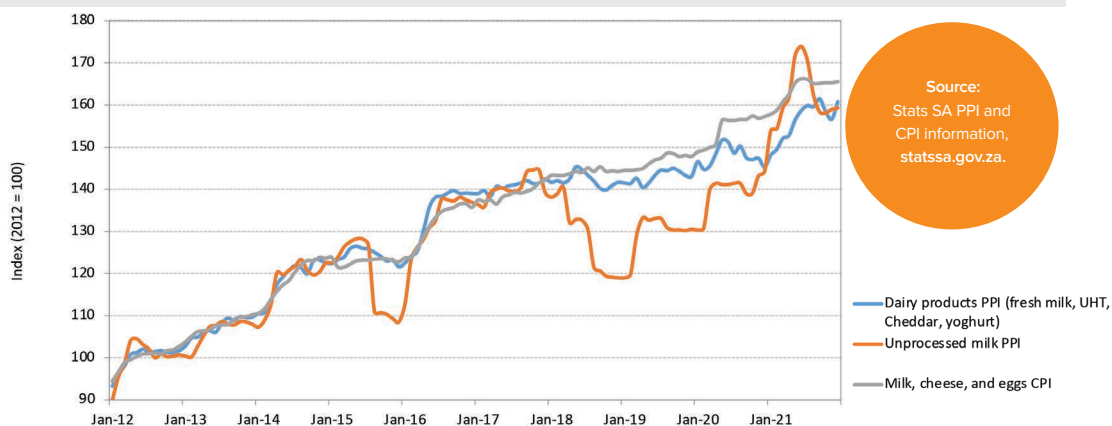
*Feb 2020 = 29 days

Figure 1 International dairy product prices (free on board), Jan 2011–Dec 2021



Source:
USDA price surveys,
exchange rate South African
Reserve Bank middle rates,
last month – average
of daily closing
values.

Acronyms and abbreviations: consumer price index (CPI) • Department of Agriculture, Land Reform and Rural Development (DALRRD) • full-cream milk powder (FMP) • Milk Producers' Organisation (MPO) • Milk South Africa (Milk SA) • producer price index (PPI) • skimmed milk powder (SMP) • South African Customs Union (SACU) • South African Milk Processors' Organisation (SAMPRO) • South African Revenue Service (SARS) • Statistics South Africa (Stats SA) • ultra-high temperature (UHT) processed • United States Department of Agriculture (USDA)

Figure 2 Monthly unprocessed milk purchase trends, Jan 2018–Dec 2021**Figure 3** Monthly cumulative net imports, milk equivalent, Jan 2017–Nov 2021**Figure 4** PPI indices of unprocessed milk and dairy products, and the CPI of milk, cheese, and eggs, Jan 2012–Dec 2021

This publication is compiled from sources that are deemed reliable. However, Milk SA and the contributors to the publication take no responsibility for the accuracy of the information. The information is, furthermore, intended to provide market signals only and Milk SA indemnifies itself against any actions based on this information.